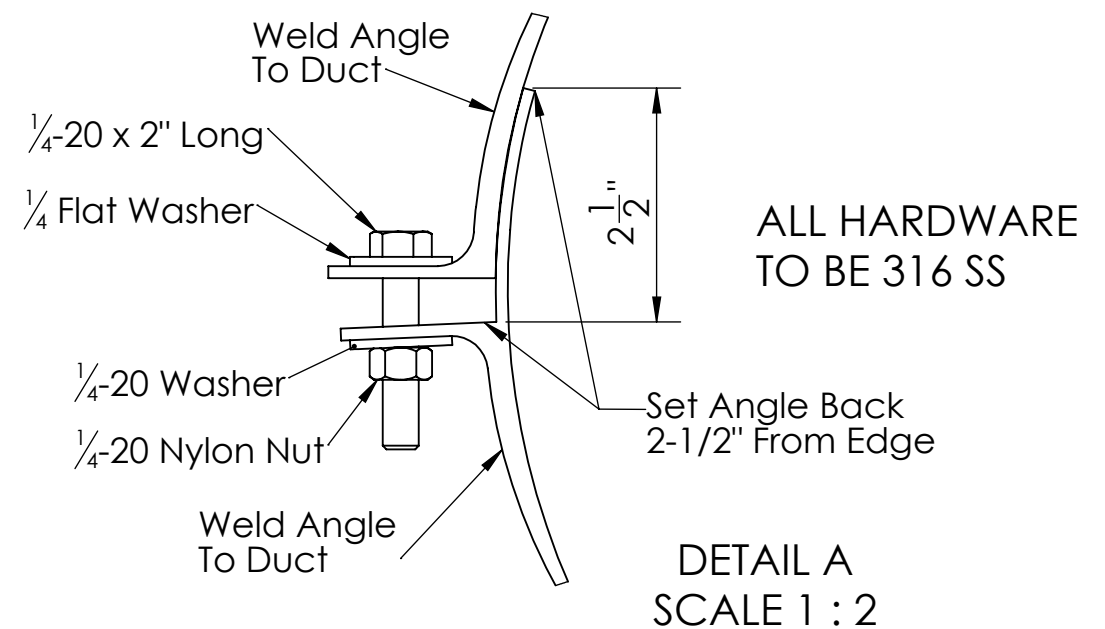
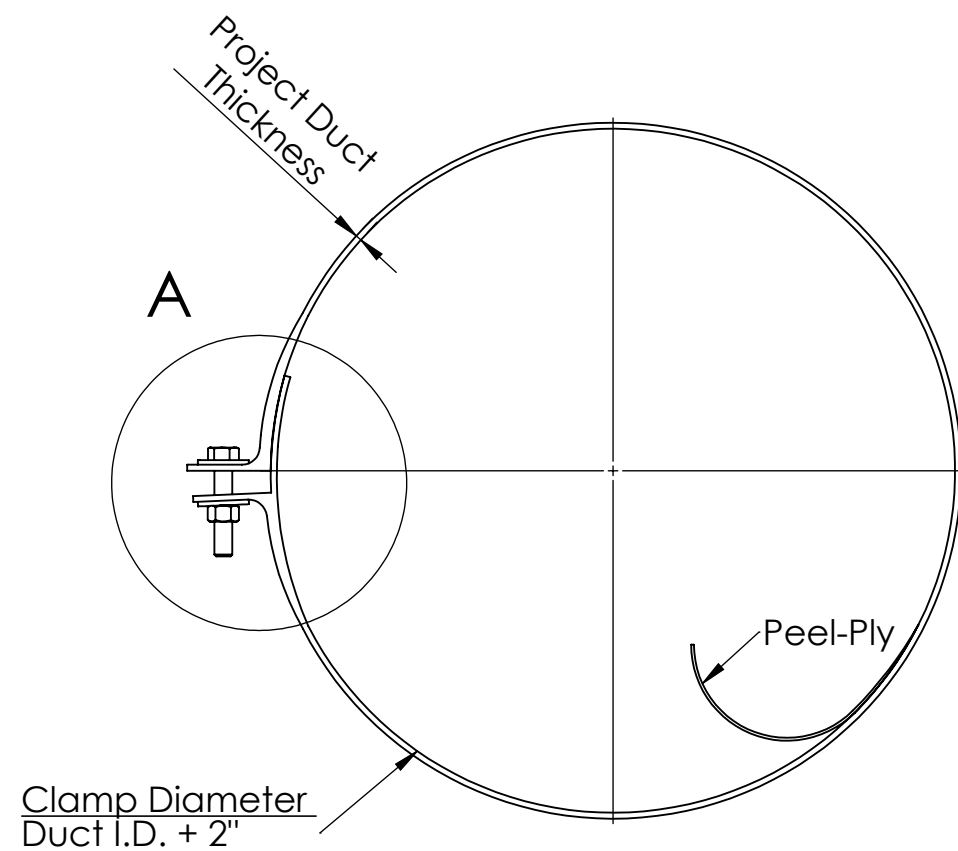
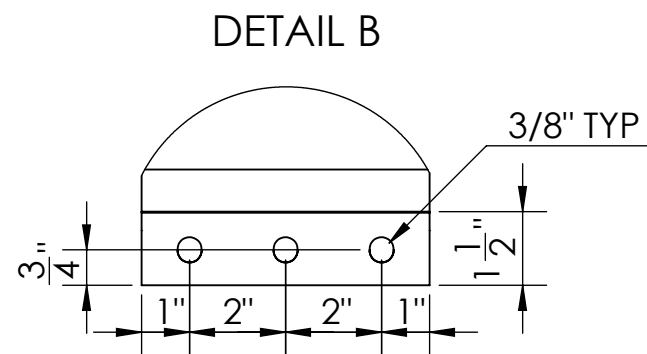
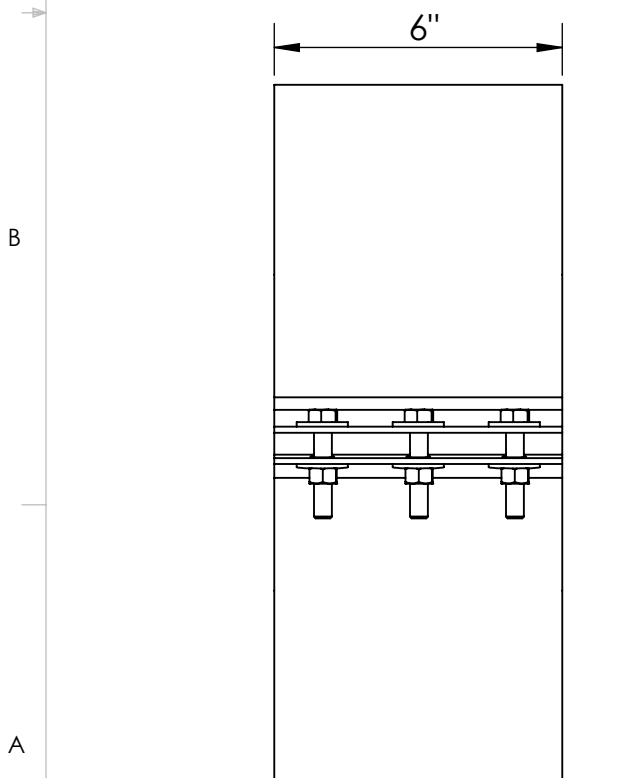
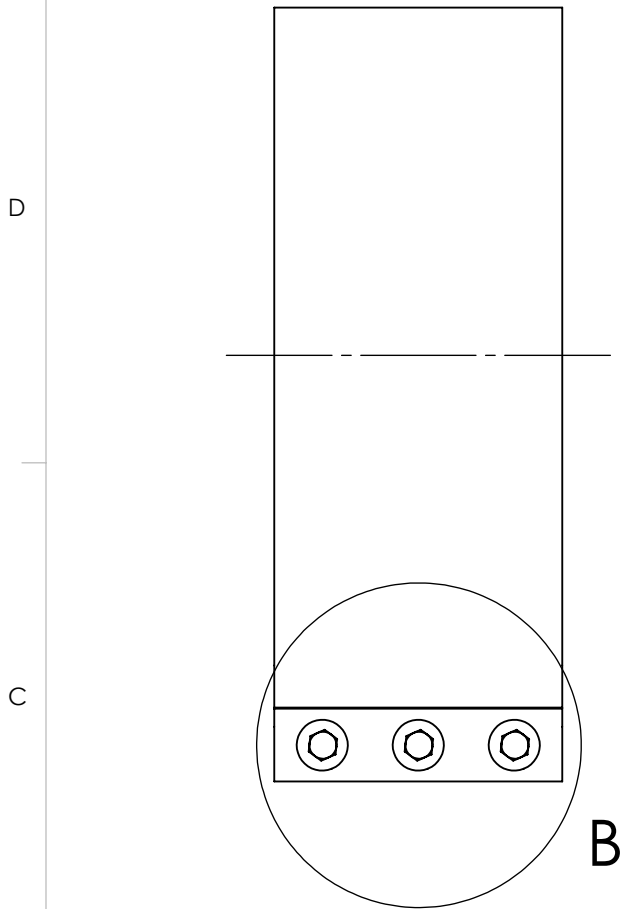
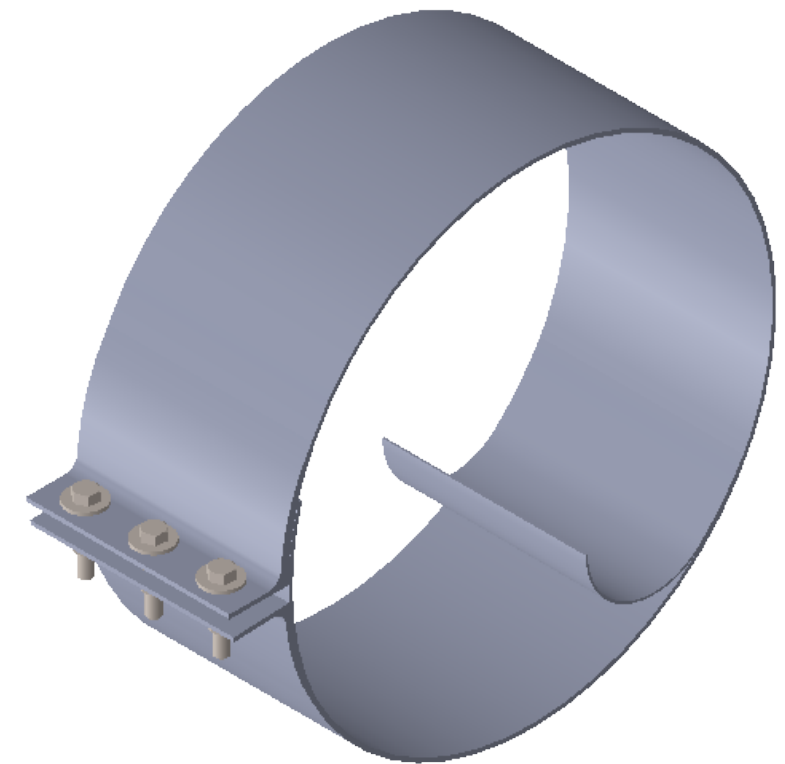


# FRP Solutions

by Monoxivent®

## UNDERDUCT CLAMP



ALL HARDWARE TO BE 316 SS

DETAIL A  
SCALE 1 : 2

- Notes:
1. Clamp will be filament wound
  2. Resin to be Monoxivent 824 for low smoke low flame
  3. Exterior to Duct System to have a Light Gray Gel Coat

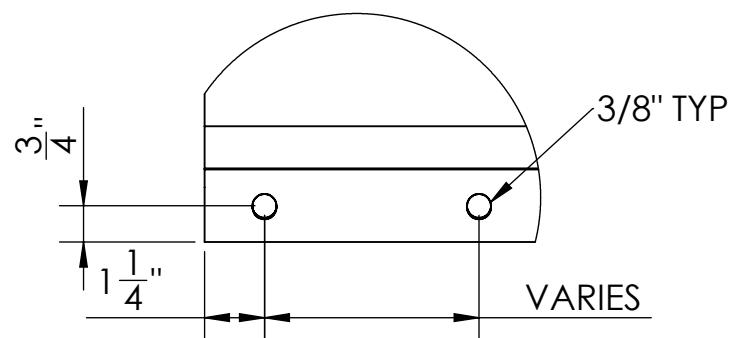
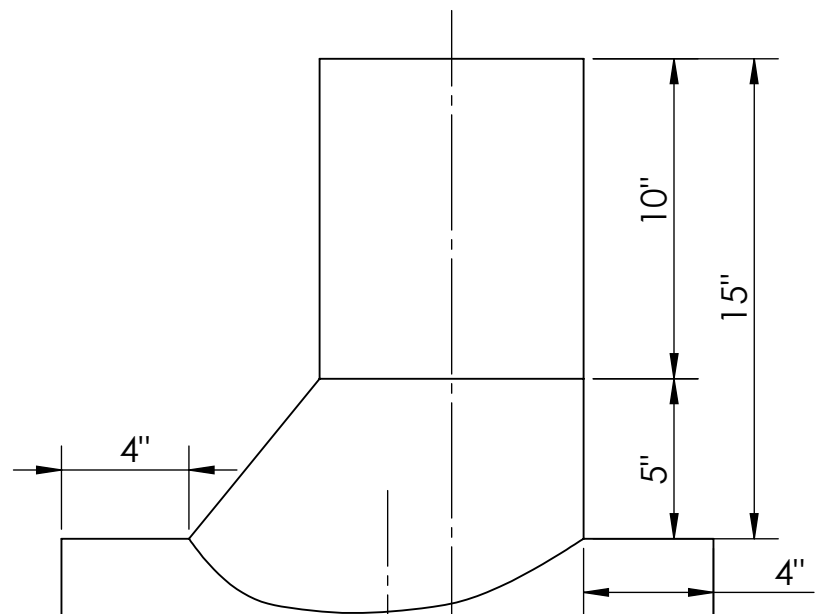
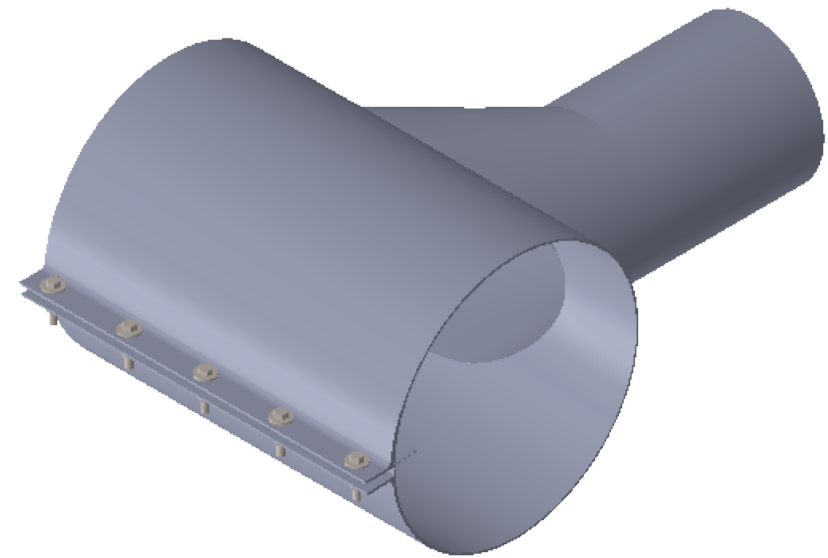
**PROPRIETARY AND CONFIDENTIAL**  
THE INFORMATION CONTAINED IN THIS DRAWING IS THE SOLE PROPERTY OF MONOXIVENT. ANY REPRODUCTION IN PART OR AS A WHOLE WITHOUT THE WRITTEN PERMISSION OF MONOXIVENT IS PROHIBITED.

	NAME	DATE	Monoxivent 1306 Mill St. Rock Island, IL 61201		
DRAWN	CC	4-29-2019	TITLE: <b>Underduct Clamp</b>		
REVISION 1	CC	7-2-2019			
REVISION 2					
REVISION 3					
REVISION 4					
REVISION 5					
REVISION 6					
REVISION 7			SIZE <b>B</b>	DWG. NO.	REV <b>1</b>
SHEET 1 OF 1					

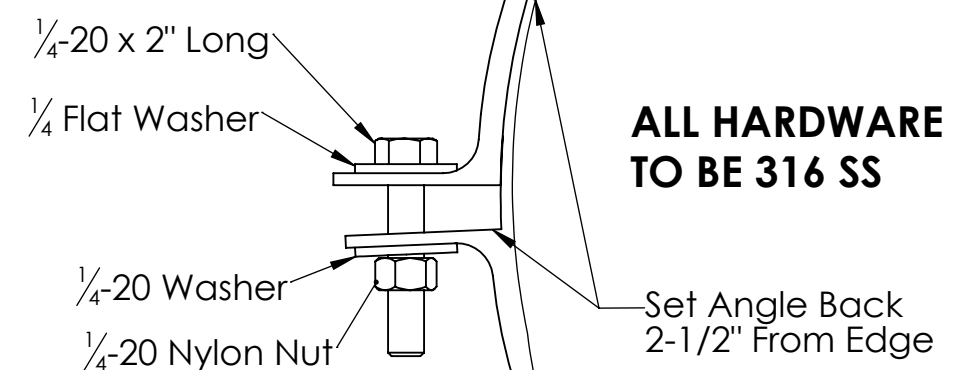
# FRP Solutions

by Monoxivent®

## UNDERDUCT CLAMP WITH 90 DEG SHOE TAP

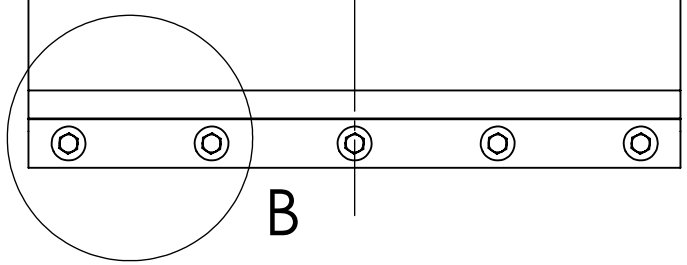


DETAIL B

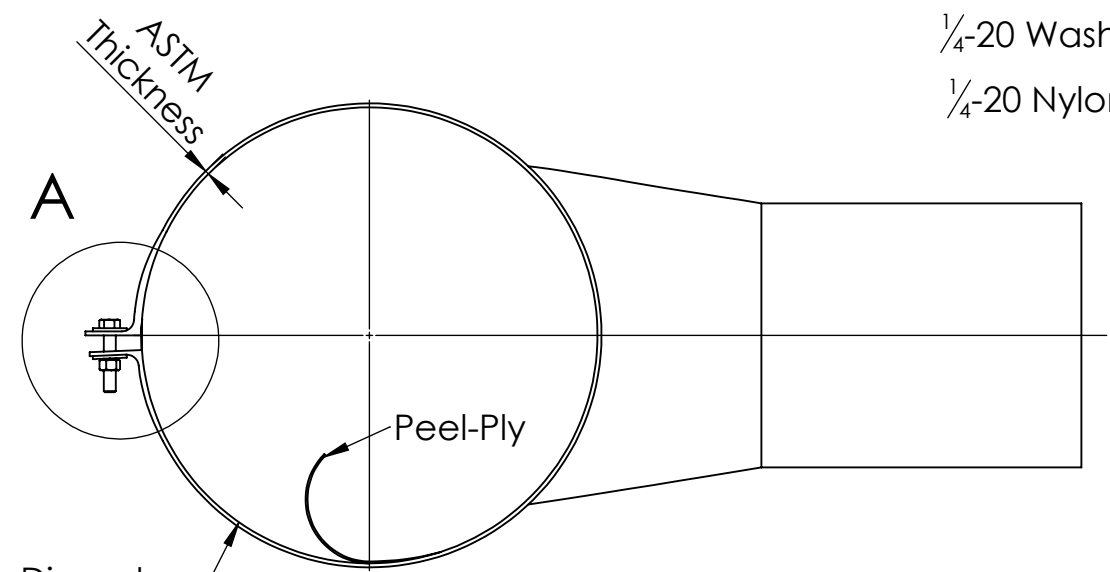
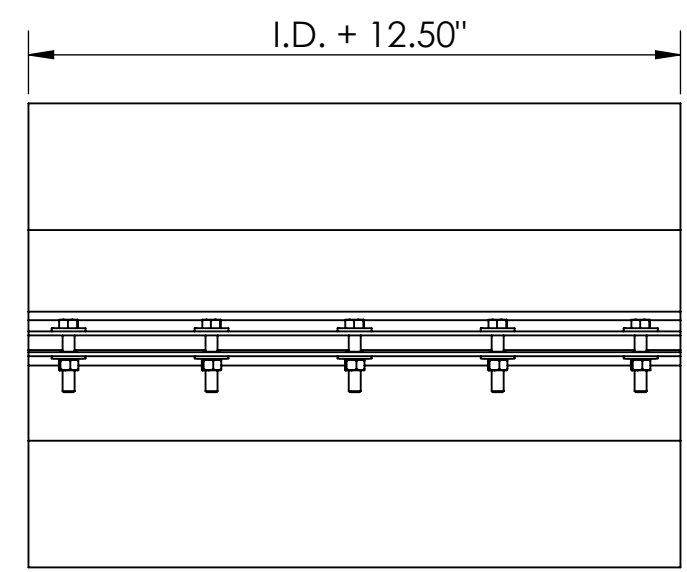


**ALL HARDWARE TO BE 316 SS**

DETAIL A  
SCALE 1 : 2



B



Clamp Diameter  
Duct I.D. + 2"

- Notes:
1. Clamp will be filament wound
  2. Resin to be Monoxivent 824 for low smoke low flame

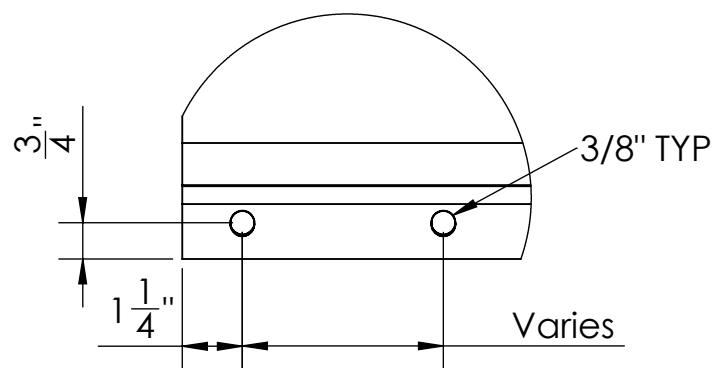
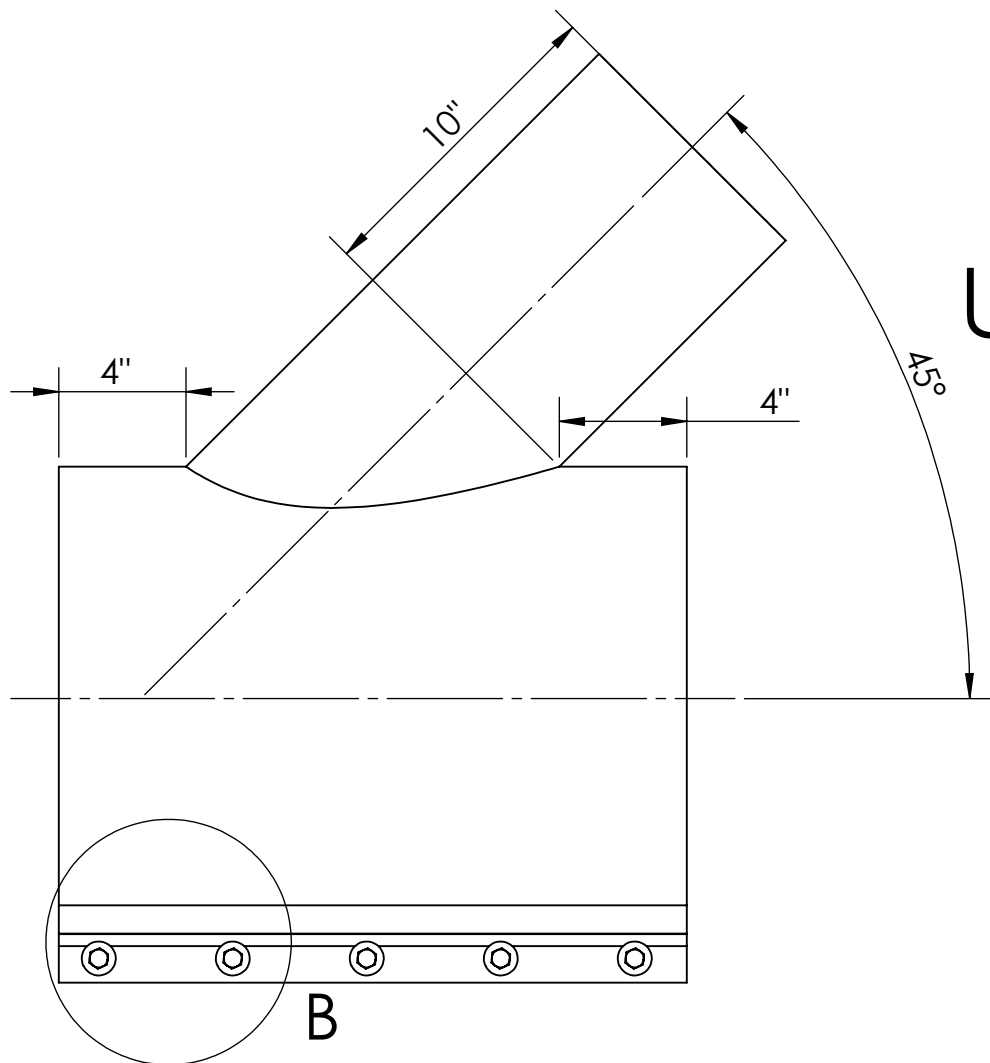
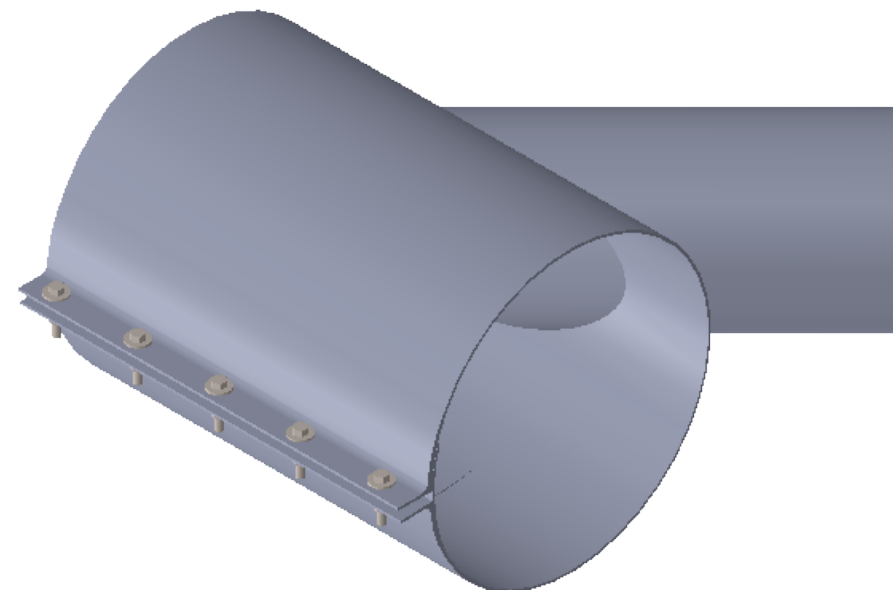
**PROPRIETARY AND CONFIDENTIAL**  
THE INFORMATION CONTAINED IN THIS DRAWING IS THE SOLE PROPERTY OF MONOXIVENT. ANY REPRODUCTION IN PART OR AS A WHOLE WITHOUT THE WRITTEN PERMISSION OF MONOXIVENT IS PROHIBITED.

	NAME	DATE	Monoxivent 1306 Mill St. Rock Island, IL 61201		
DRAWN	CC	4-29-2019	TITLE: <b>Underduct Clamp</b>		
REVISION 1	CC	7-2-2019			
REVISION 2					
REVISION 3					
REVISION 4					
REVISION 5					
REVISION 6					
REVISION 7			SIZE <b>B</b>	DWG. NO.	REV <b>1</b>
SHEET 1 OF 1					

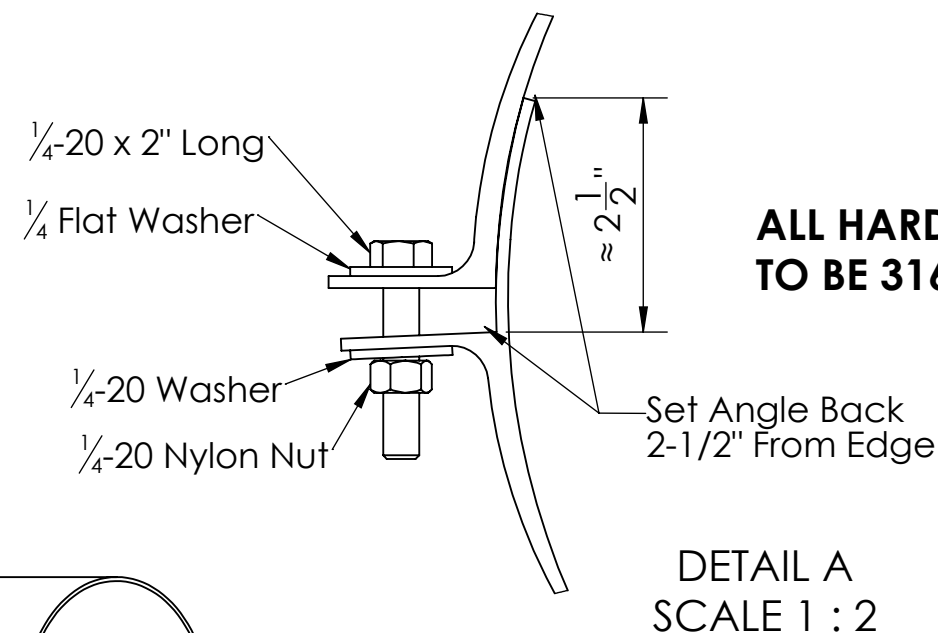
# FRP Solutions

by Monoxivent®

## UNDERDUCT CLAMP WITH 45 DEG TAP

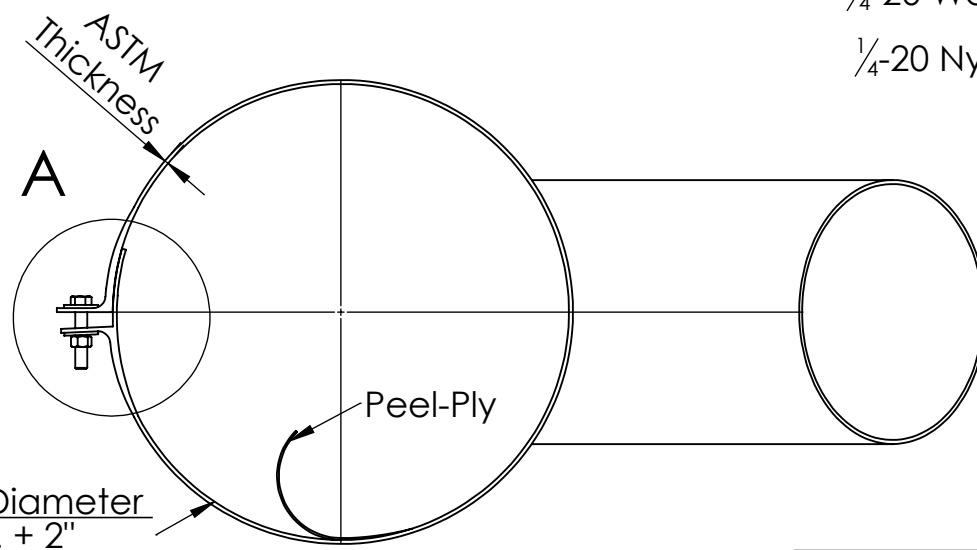
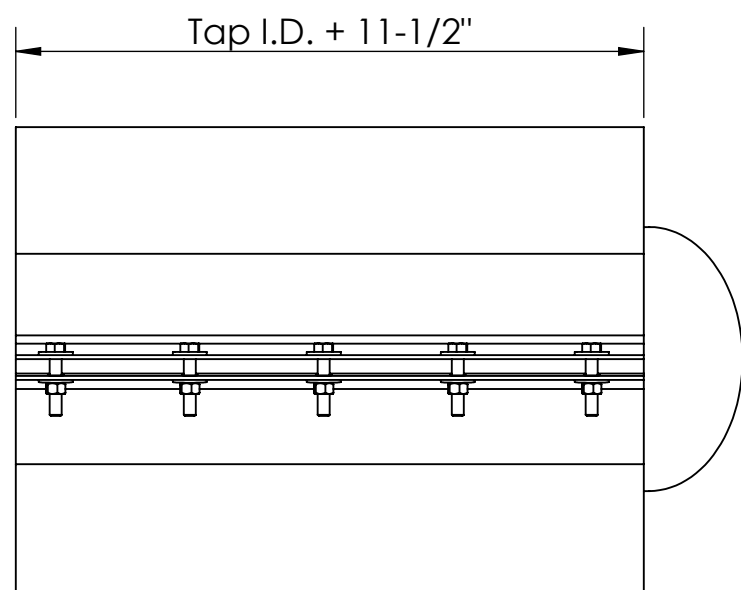


DETAIL B



**ALL HARDWARE TO BE 316 SS**

DETAIL A  
SCALE 1 : 2



Clamp Diameter  
Duct I.D. + 2"

**PROPRIETARY AND CONFIDENTIAL**  
THE INFORMATION CONTAINED IN THIS DRAWING IS THE SOLE PROPERTY OF MONOXIVENT. ANY REPRODUCTION IN PART OR AS A WHOLE WITHOUT THE WRITTEN PERMISSION OF MONOXIVENT IS PROHIBITED.

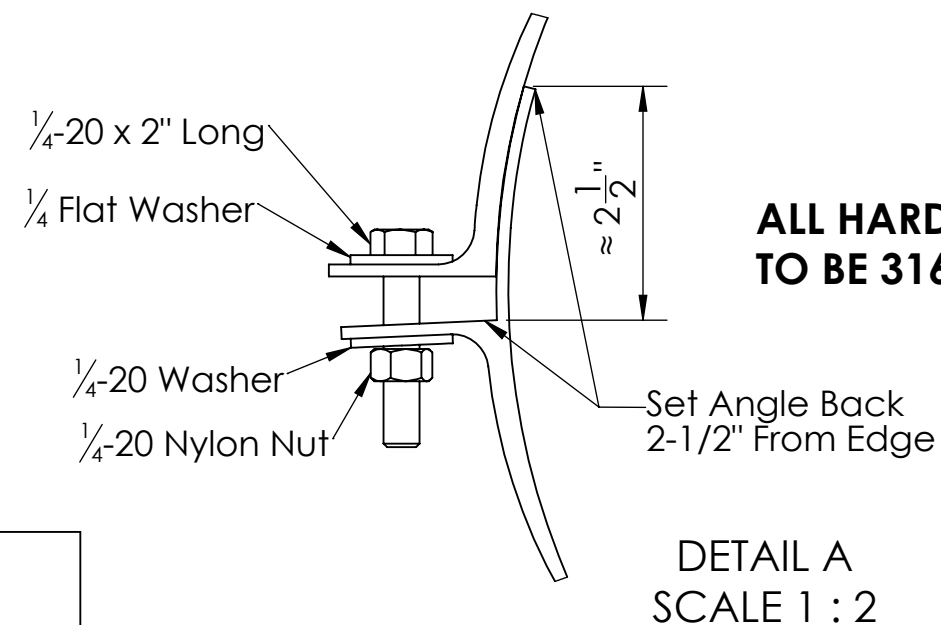
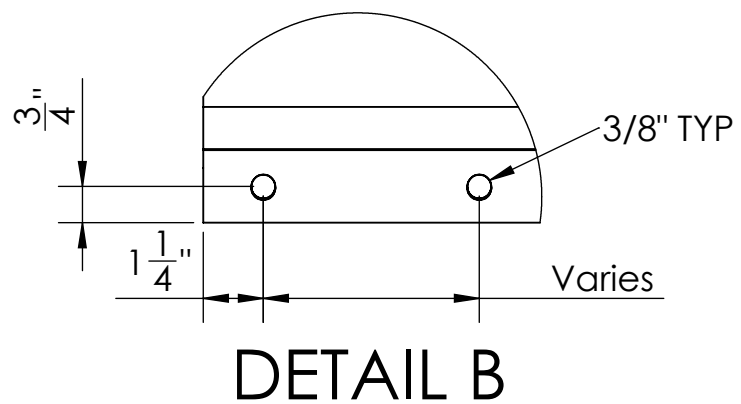
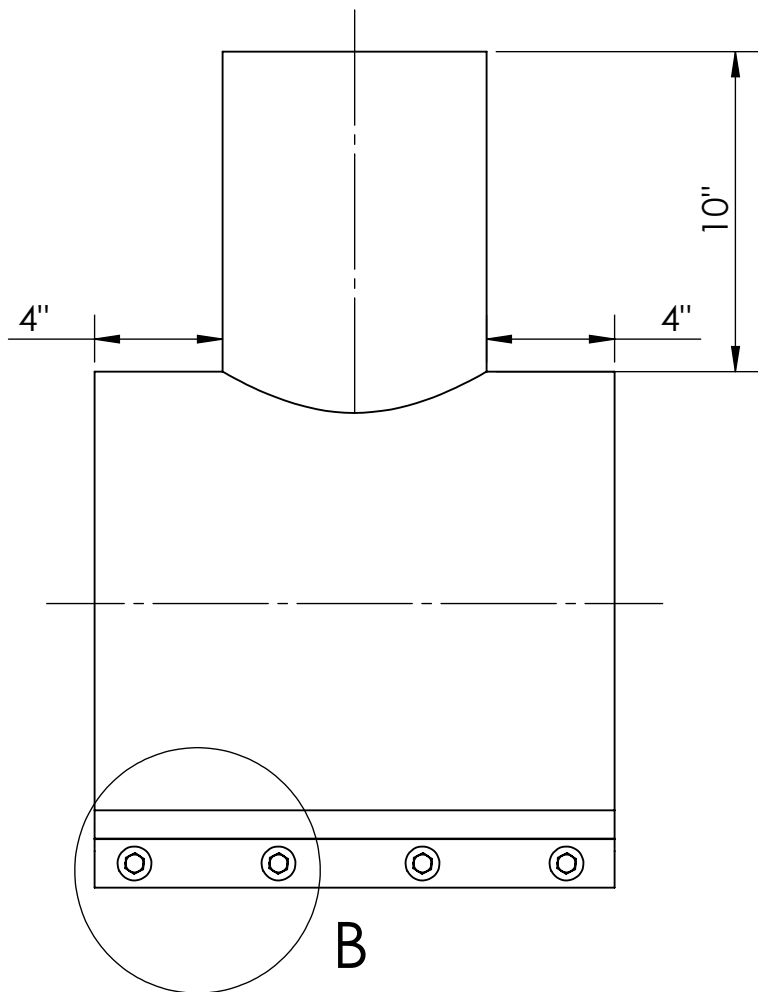
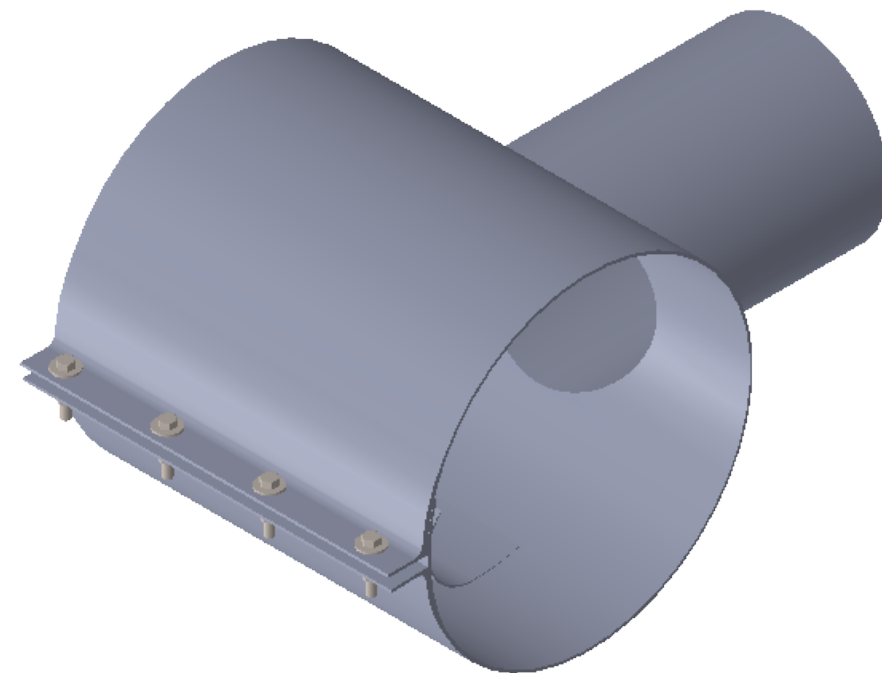
- Notes:
1. Clamp will be filament wound
  2. Resin to be Monoxivent 824 for low smoke low flame

	NAME	DATE	Monoxivent 1306 Mill St. Rock Island, IL 61201		
DRAWN	CC	4-29-2019	TITLE: <b>Underduct Clamp</b>		
REVISION 1	CC	7-2-2019			
REVISION 2					
REVISION 3					
REVISION 4					
REVISION 5					
REVISION 6					
REVISION 7			SIZE <b>B</b>	DWG. NO.	REV <b>1</b>
SHEET 1 OF 1					

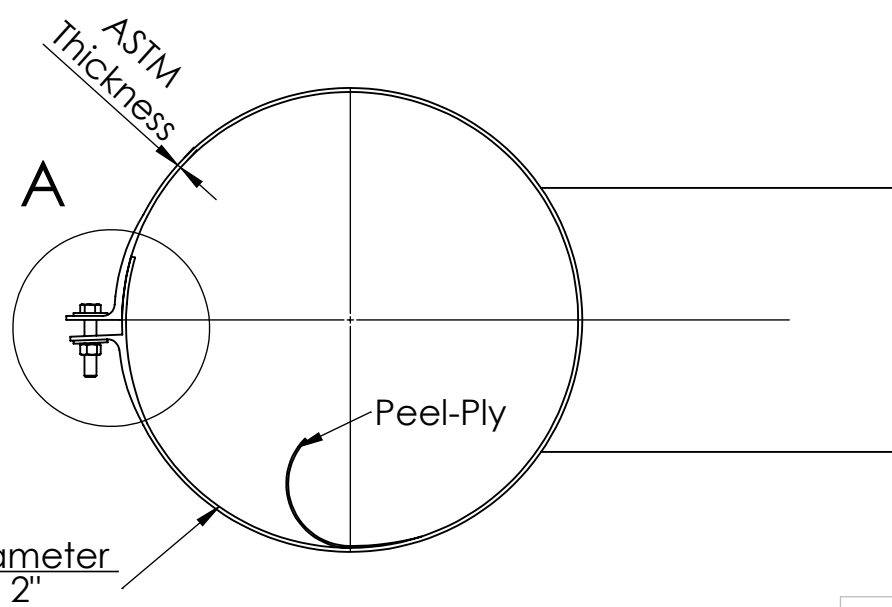
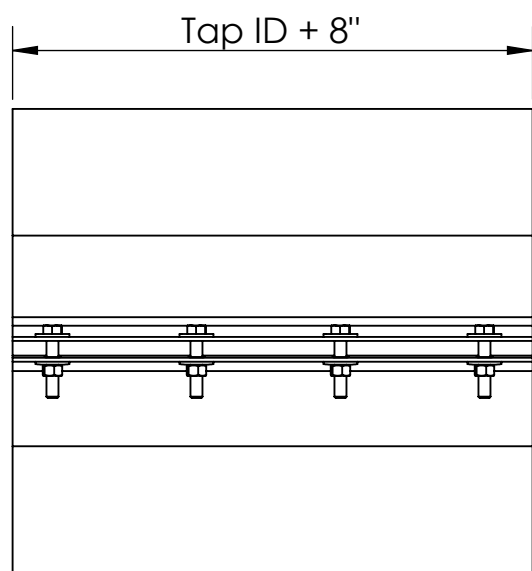
# FRP Solutions

by Monoxivent®

## UNDERDUCT CLAMP WITH 90 DEG TAP



**ALL HARDWARE TO BE 316 SS**



- Notes:
1. Clamp will be filament wound
  2. Resin to be Monoxivent 824 for low smoke low flame

**PROPRIETARY AND CONFIDENTIAL**  
THE INFORMATION CONTAINED IN THIS DRAWING IS THE SOLE PROPERTY OF MONOXIVENT. ANY REPRODUCTION IN PART OR AS A WHOLE WITHOUT THE WRITTEN PERMISSION OF MONOXIVENT IS PROHIBITED.

	NAME	DATE	<i>Monoxivent</i> 1306 Mill St. Rock Island, IL 61201		
DRAWN	CC	4-29-2019	TITLE: <b>Underduct Clamp</b>		
REVISION 1	CC	7-2-2019			
REVISION 2					
REVISION 3					
REVISION 4					
REVISION 5					
REVISION 6					
REVISION 7			SIZE <b>B</b>	DWG. NO.	REV <b>1</b>
SHEET 1 OF 1					